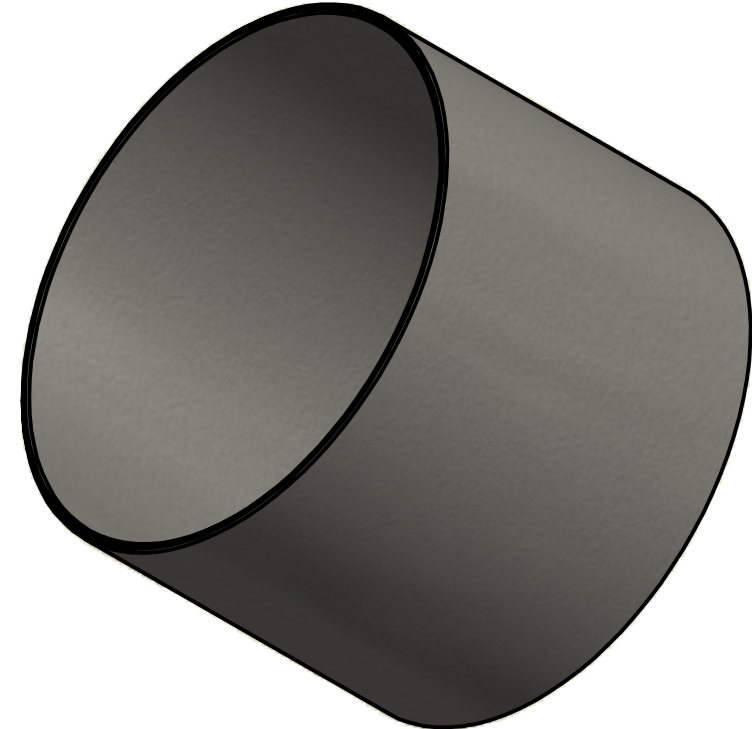
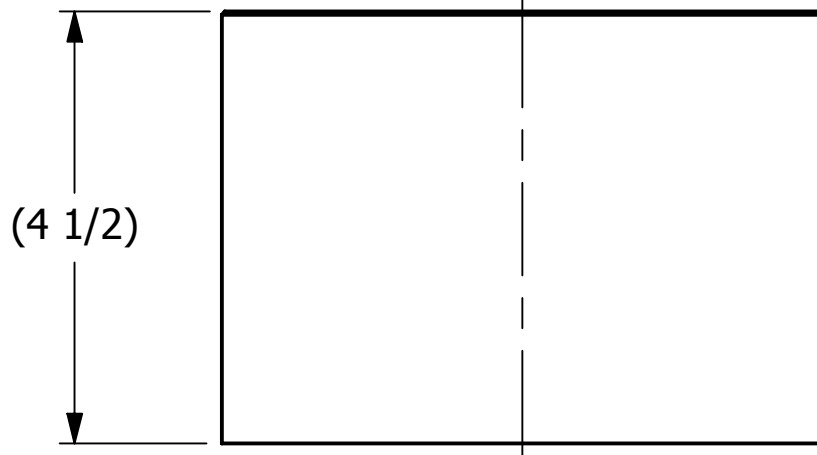
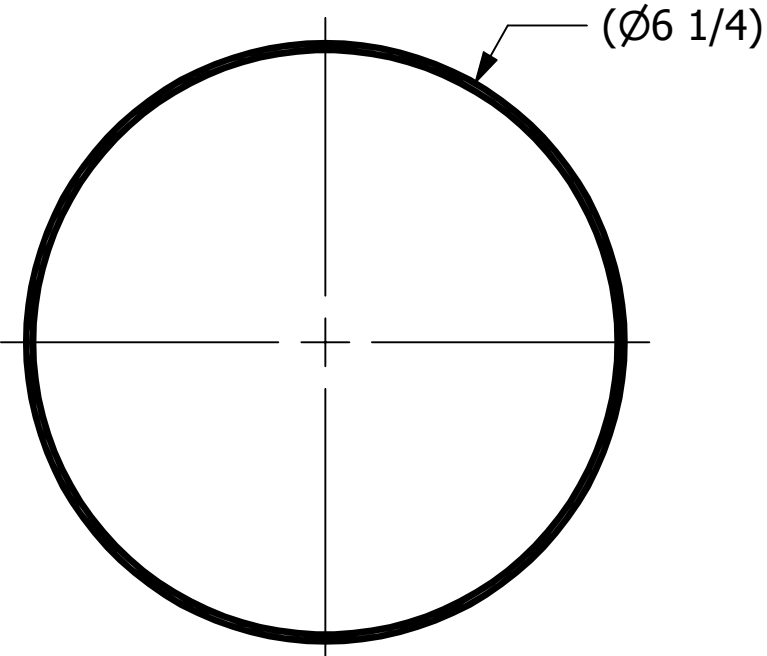


SALES DRAWING

SALES DRAWING



ISOMETRIC VIEW

REV	BY	DATE	DESCRIPTION
B	RJP	2-10-15	REMOVED I.D. DIM, ADDED GAUGE NOTE 6.26±.015 WAS 6.2636/6.2620
A	BG	2/13/14	DRAWING RELEASED FOR PRODUCTION

<small>UNLESS OTHERWISE SPECIFIED DIMENSIONAL TOLERANCES</small> FRACTIONAL: ±1/16 X.XX: ±.03 X.XXX: ±.015 ANGULAR: ±1° <small>DEBURR ALL SHARP EDGES. ALL MACHINED SURFACES TO HAVE A 125 RMS FINISH UNLESS NOTED OTHERWISE.</small>	DRAWN BY:	BG
	CHECKED BY:	VD
	PROTOTYPE BY:	BG
	PROTOTYPE DATE:	12/4/2013
	APPROVED FOR PRODUCTION BY:	BG
THIRD ANGLE PROJECTION	PRODUCTION DATE:	2/13/2014

PART NAME: OUTLET NOZZLE		
MATERIAL: 304 SS		
PROJECT #: 110114	SHEET #: 1 OF 1	SCALE: 1:2
DRAWING #: B25793	PART #: RPSNEN20	

THIS PRINT, PROPERTY OF SALCO PRODUCTS INC., CONTAINS PROPRIETARY INFORMATION AND MUST NOT BE COPIED, REPRODUCED, OR USED DETRIMENTALLY TO OUR INTEREST.